

Cable Lug

Heavy Duty

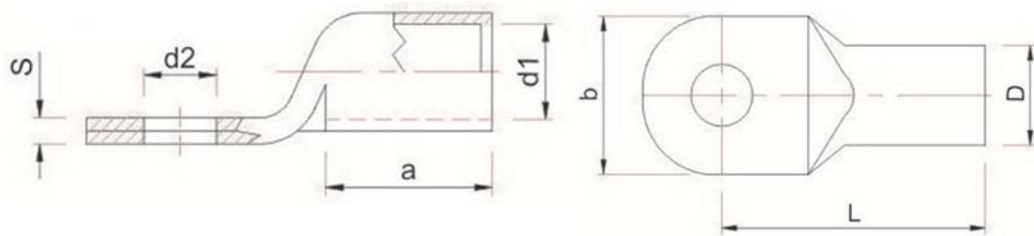
IEC 61238-1



Specification

Material	Copper
Finishing	Nickel Plated
Composition of Copper	≥ 99,92%
Electrical Conductivity	≥ 98%
Tensile Strength	≥ 250N
Class	A

Dimension (mm)



Ordering Code

Cable Size (sqmm)	Bolt Ø	Dimension (mm)							Box Contain (Pcs)	Weight per-box (Kg)	Ordering Code
		a	b	d1	d2	D	L	S			
2.5	M5	7.5	8.0	2.3	5.3	4.2	15.5	1.0	100	0.15	80000
4	M5	10.2	9.0	3.0	5.3	5.0	18.0	1.4	100	0.21	80001
6	M6	10.5	10.0	4.0	6.3	6.0	20.0	1.4	100	0.28	80002
10	M6	12.0	12.0	4.5	6.4	7.0	21.0	1.4	100	0.52	80003
16	M6	16.0	14.2	5.5	6.3	8.5	25.0	2.0	100	0.96	80004
25	M6	17.0	15.5	7.0	6.3	10.0	30.0	2.7	100	1.28	80005
35	M8	20.3	17.0	8.5	8.3	12.0	35.0	3.5	100	2.05	80006
50	M10	22.4	20.2	10.0	10.2	14.0	41.0	4.7	100	3.27	80007
70	M10	25.0	23.0	11.5	10.3	16.0	45.0	4.7	50	2.44	80008
95	M12	28.0	25.6	13.5	13.0	18.0	50.0	4.7	50	2.82	80009
120	M12	29.0	28.0	15.0	13.0	19.5	53.0	4.7	50	3.42	8000A
150	M12	33.0	30.2	16.5	13.0	21.0	59.0	4.7	40	3.43	8000B
185	M16	38.0	35.0	19.5	17.0	24.0	65.0	4.7	20	2.13	8000C
240	M16	41.5	38.0	21.0	17.0	26.0	76.0	5.2	20	3.03	8000D
300	M20	49.0	43.0	23.5	20.5	29.5	87.3	6.0	16	3.58	8000E
400	M20	55.4	49.2	27.0	20.5	34.0	91.0	7.3	20	6.67	8000F
500	M20	78.2	59.3	31.0	20.5	42.0	127.5	11.2	10	8.85	8000G