



Company Profile 2022

GEM MEK - ELE

PT. GUNA ERA MANUFAKTURA

Jl Jati Raya Blok J2 No 1, Newton Techno Park
Lippo Cikarang Bekasi 17550

T +62 -21-8990 7620 F +62 -21-8990 7959

E info@gae.id



COMPANY PROFILE

- Location : Newton Techno Park, Lippo Cikarang Bekasi, Indonesia
- Investment : USD 10 Mio.
- Business Line : Mechanical and Electrical Manufacturing, Engineering & Services

- Facilities
 - Land : 40,000 sq.m
 - Factory : 15,000 sq.m



MILESTONES

- 1962 Establishment of PT Guna Elektro
 - * Contracting business in infrastructure projects
 - * Distribution of electrical & mechanical equipments
- 1985 Establishment of Mechanical Production facility at Pulogadung
 - * Fabrication of Water Treatment & Sewage Treatment
 - * Production of "SERO" centrifugal pumps
 - * Fabrication of steel construction
- 1986 Establishment of Electrical Production facility at Sunter
 - * Metering production (under license of H&B - Germany)



MILESTONES

- 1987 Starting of R&D Activities for:
 - * electronic metering (Watt meter, $\cos \phi$ meter, etc)
 - * electronic protection relay & power electronic (ballast, charger, rectifier, etc)
- 1990 Full manufacturing of own design:
 - * electronic meter
 - * protection relays
- 1993 Relocation of LV Panel Production to Sunter facility



MILESTONES

- 1997: Establishment of PT GUNA ERA MANUFAKTURA
*Consolidation of Pulogadung & Sunter facilities ISO
- 2000: 9000 Electrical plant
- 2006: ASME Certificate for "U" & "U2" ISO
- 2007: 9001:2008 Mechanical plant OHSAS
- 2009: 18001:2007
- 2011: ISO 14000:2004
- 2015: National Board (NB) Certificate of Authorization "R"
Repair and Alteration Pressure Vessel
- 2017: SMK3 Certificate





Mechanical Division

We Provide Manufacturing and Engineering Services, Specialized in Environmental, Industrial Processing Equipment & Pressure Vessel



Activities Of Mechanical Division:

- Engineering and Fabrication Pressure Vessel
- Fabrication, Installation & Engineering Services of steel Construction for Environment Facilities
- Fabrication & Engineering Services of Industrial Equipment Facilities
- Manufacturing of Multi Stage Centrifugal Pumps



Fabrication Competence

- Pressure Vessels
- Heat Exchangers
- Skid & Piping Packages
- Frame Steel Structure
- Multistage Centrifugal Pump
- Others Customer Request

System

- Water Treatment Plant
- Sewage Treatment Plant
- Dust Collector



Products

- Water Treatment Package Flow rate 5 - 200 m³/h
- Waste Water Treatment Flow rate 3 - 454 m³/day
- Pressure Vessels
- Customized construction



Lighted Buoy



Products

- Air Compressor System
- Dust Collectors
- Centrifugal Pumps

Capacity up to 42,000 m³ /h

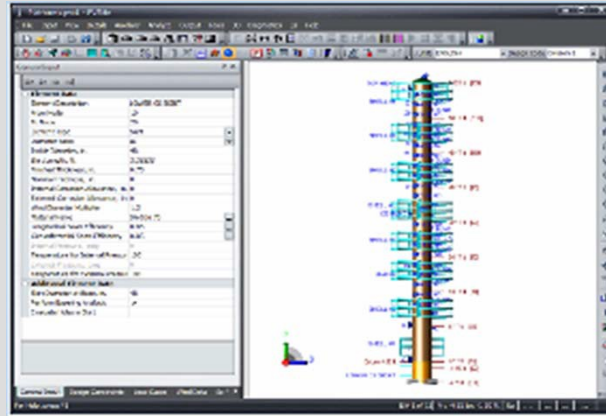
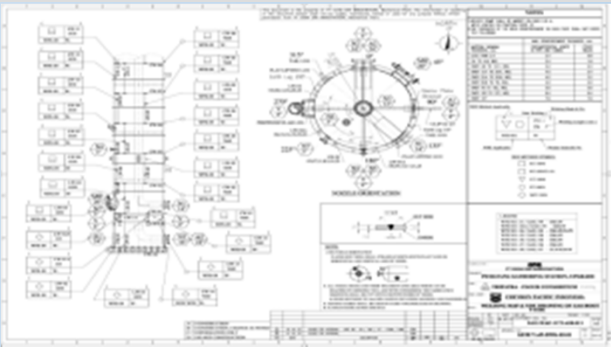
Capacity up to 0.6 -36 m³ /h

Pressure 25 bar

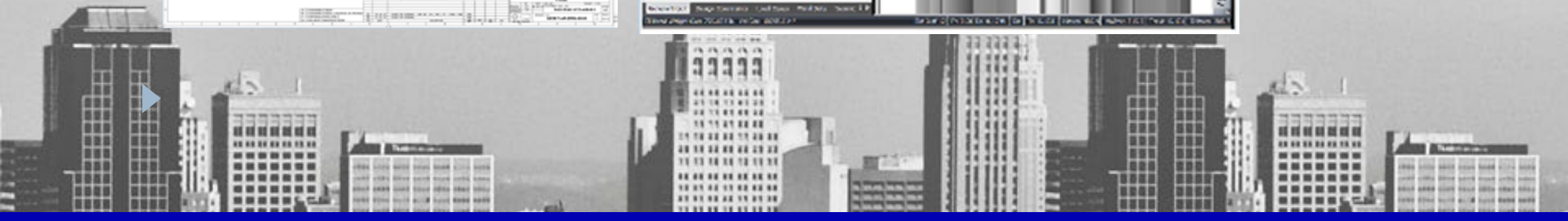
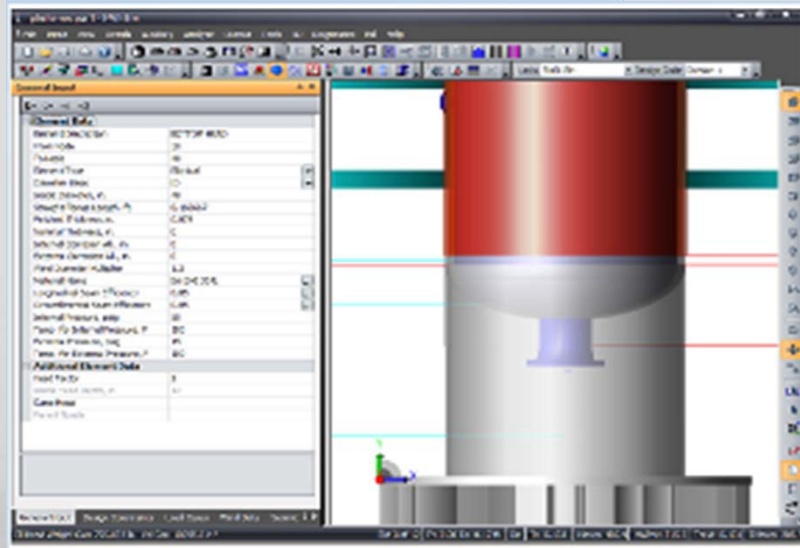




Our Team Work :
Skillful Engineering Team



PV Elite,
Pressure Vessel
Software



Skillful Fabrication Team

- Welder certificate 3G-6G
MIGAS, DISNAKER, ASME & AWS
- WPS/PQR (MIGAS, DISNAKER,
ASME & AWS)
- Welding Process : SMAW, GTAW,
GMAW, FCAW & SAW



DEPARTEMEN ENERGI DAN SUMBER DAYA MINERAL REPUBLIK INDONESIA DIREKTORAT JENDERAL MINYAK DAN GAS BUMI SERTIFIKAT KUALIFIKASI PERULAN	
Nomor: 2017/04.42/SN/1/2017	
PERUSAHAAN Nama: PT. GUNA ERA MINDA Alamat: Jl. Raya Cilemer, No. 100, Cilemer, Kabupaten Bandung, Jawa Barat No. Telp: 022-2531111 No. Fax: 022-2531111 Nama: PT. GUNA ERA MINDA Alamat: Jl. Raya Cilemer, No. 100, Cilemer, Kabupaten Bandung, Jawa Barat No. Telp: 022-2531111 No. Fax: 022-2531111	
PROJEK Nama: ... Lokasi: ... Pekerjaan: ...	PEKERJA Nama: ... No. Sertifikat: ... Tanggal: ...
PROSEDUR Nama: ... No. Dokumen: ... Revisi: ...	WELDING PROCEDURE SPECIFICATION (WPS) No. Dokumen: ... Revisi: ...
PROSEDUR KUALIFIKASI PERULAN (PQR) No. Dokumen: ... Revisi: ...	WELDING PROCEDURE QUALIFICATION (WPQ) No. Dokumen: ... Revisi: ...
TEKNIK Nama: ... No. Sertifikat: ... Tanggal: ...	WELDING PROCEDURE QUALIFICATION (WPQ) No. Dokumen: ... Revisi: ...





MASTERSLIST ALAT UKUR DAN ALAT TEST

No.	Sp. No.	Typ. No.	Spesifikasi	Merek/Pabrikan	No. Seri	Model/Tipe	Tempat Uji	Asuransi	Exp. Date	Ukuran/Dimensi	Unit	Keadaan
1.												
2.												
3.												
4.												
5.												

MASTERSLIST ALAT UKUR DAN ALAT TEST

No.	Sp. No.	Typ. No.	Spesifikasi	Merek/Pabrikan	No. Seri	Model/Tipe	Tempat Uji	Asuransi	Exp. Date	Ukuran/Dimensi	Unit	Keadaan
1.												
2.												
3.												
4.												
5.												

Controlled Test & Measuring tool



Hydrostatic Test 120 kg/cm² (1706 psi)



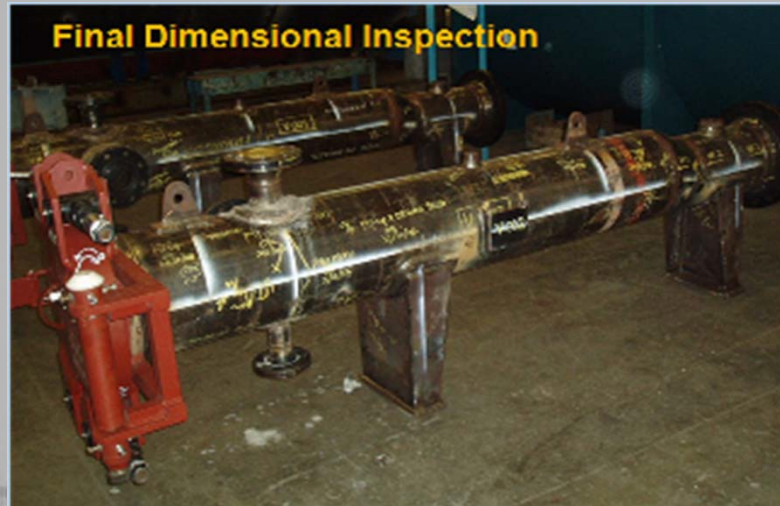
Dye Penetrant Inspection



**TELESCOPIC PERFORMANCE TEST
For Gas Separator – AIR DRILLING**



Fit-up Inspection



Final Dimensional Inspection



Work Shop Facilities :

- Welding Devices

1. GMAW & FCAW

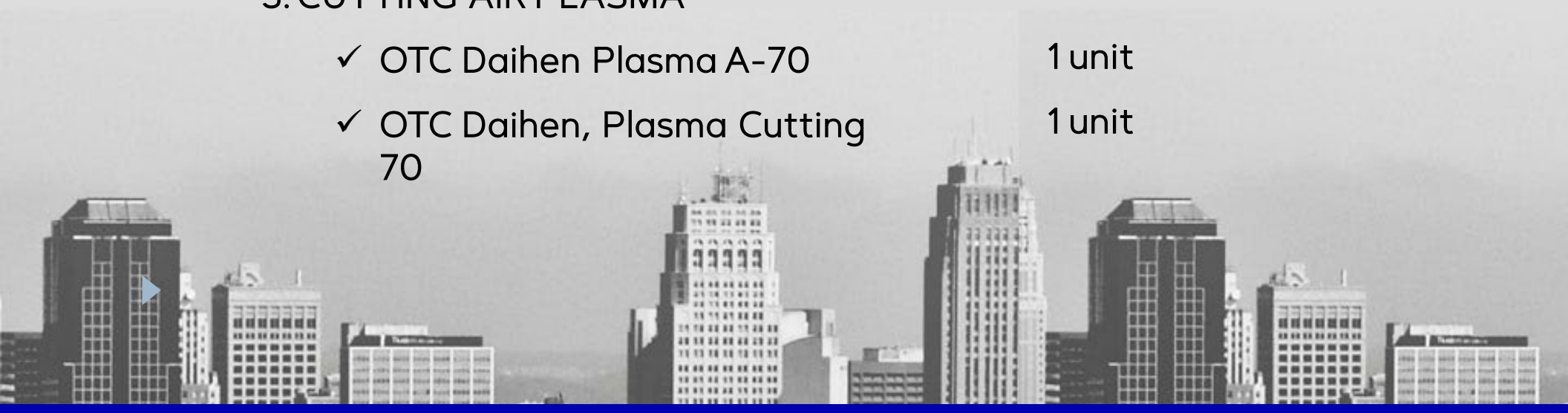
- ✓ OTC- Daihen XD 350 12 unit
- ✓ OTC- Daihen XD 500 2 unit

2. SMAW / GTAW

- ✓ THERMAL ARCS. 300 7 unit
- ✓ THERMAL LS 300 1 unit

3. CUTTING AIR PLASMA

- ✓ OTC Daihen Plasma A-70 1 unit
- ✓ OTC Daihen, Plasma Cutting 70 1 unit



Work Shop Facilities :

- Machine
 1. Universal Face Lathe (HR 2000, dia. 2000 x 870, 15 kW)
 2. Lathe
 - CHU 1000 G Dia. 15" x 1000, 6 kW
 - YAM 700, dia. 14" x 700, 2,2 kW
 - YAM 1000, dia. 20" x 1000
 - SJ 2040 G, dia. 20" x 1000
 - PINACHO, S-90/200
 3. Horizontal Bed Milling (KF-VBM-A)
 4. Vertical & Horizontal Milling (KF-HI 1000L x 230 W, 1.5 kW)
 5. Automatic Cylinder Grinder (JMC 1000 AGC dia. 4" x 1000, 5 kW)



Work Shop Facilities :

6. Broaching (RS 6, 2.5 kW)
7. Hydraulic Saw (CFG 225 dia. 8", 2.5 kW)
8. Radial Drilling
 - ✓KMR 1600 DH 1100 H x 1250 L, 7.5 kW
 - ✓KUD-540, Swing 540
9. Upright Drilling & Tapping (Drill dia. 40 (mm), TAP 16, 1,5 kW)
10. Hydraulic Press Machine (100Ton; dia. 600 to 2,750; 12t mm)
11. Head Forming/Flanging Machine (dia. 600 to 2,750; 12t mm)
12. Rolling Plate Machine (dia. 400 to up; 12t mm)
13. SAW Welding Machine (dia. 3,500; 30t mm)
14. Gas Cutting Machine

Work Shop Facilities :



Hydraulic Press 100 Ton



Work Shop Facilities :



Gas Cutting Machine



Rolling-Plate Machine



SAW Welding Machine



Lathe Machine

Work Shop Facility :

SURFACE TREATMENT & PAINTING

1. Air Compressor
 - BOGE, S 513 m³/h, 7 bar
 - MITSUI SEIKI, Z 375 A, 7 bar
2. Airless Spray Gun (GRACO, Pres. 100 psi,
3. Blasting Equipment (CLEMCO - 3 CW1028)
4. Blasting Room (5000W x 6000H x 10000L)
5. Painting Room (12000W x 7000H x 12000L)
6. Dust Collection system



- **Miscellaneous**

1. Over Head Crane, 2 x 10 Ton
2. Over Head Crane, 1 x 5 Ton
3. Forklift, 1 x 3 Ton



ISO 9001 : 2008



CERTIFICATE OF REGISTRATION

This is to certify that:

PT Guna Era Manufaktur Mechanical Plant

Jl. Jati Raya Blok J2 No. 1-2-3 Newton Techno Park Lippo Cikarang Bekasi 17550
West Java INDONESIA

operates a

QUALITY MANAGEMENT SYSTEM

which complies with the requirements of

ISO 9001:2008

for the following scope

Manufacturing and installation of mechanical equipment for industrial & environmental facilities including design of pressure vessels.

Certificate No: QEC24217

Issued: 10 March 2018
Expires: 14 September 2018

Originally Certified: 12 April 2007
Current Certification: 10 March 2016

Heather Mahon

Heather Mahon
Acting Head of Policy, Risk and Certification



Registered to:
SAI Global Certification Services Pty Ltd (ACN 107116 000) 880 George Street, Sydney NSW 2000 Australia and SAI Global Limited
880 George Street Sydney NSW 2000 Australia. SAI Global Limited is authorised by the UK Government to issue Certificates for Certification
to all the states and territories of Australia. SAI Global is not responsible for the quality of the products or services of the
holders. This certificate remains the property of SAI Global and must be returned to SAI Global upon request. To verify that this
certificate is current please refer to SAI Global's online Certification register at www.sai-global.com



OHSAS 18001 : 2007



CERTIFICATE OF REGISTRATION

This is to certify that:

PT Guna Era Manufaktur Mechanical Plant

Jl. Jati Raya Blok J2 No. 1-2-3 Newton Techno Park Lippo Cikarang Bekasi 17550
West Java INDONESIA

operates an

OCCUPATIONAL HEALTH & SAFETY MANAGEMENT SYSTEM

which complies with the requirements of

OHSAS 18001:2007

for the following scope

Manufacturing and installation of mechanical equipment for industrial & environmental facilities including design of pressure vessels.

Certificate No: OHS20881

Issued: 10 March 2018
Expires: 11 April 2019

Originally Certified: 12 April 2010
Current Certification: 10 March 2016

Heather Mahon

Heather Mahon
Acting Head of Policy, Risk and Certification



Registered to:
SAI Global Certification Services Pty Ltd (ACN 107116 000) 880 George Street, Sydney NSW 2000 Australia and SAI Global Limited
880 George Street Sydney NSW 2000 Australia. SAI Global Limited is authorised by the UK Government to issue Certificates for Certification
to all the states and territories of Australia. SAI Global is not responsible for the quality of the products or services of the
holders. This certificate remains the property of SAI Global and must be returned to SAI Global upon request. To verify that this
certificate is current please refer to SAI Global's online Certification register at www.sai-global.com



EMS 14001 : 2015



CERTIFICATE OF REGISTRATION

This is to certify that:
PT Guna Era Manufaktur

Jl. Jati Raya Blok J2 No. 1-3 Newton Techno Park, Lippo Cikarang, Bekasi 17550,
 West Java INDONESIA

operates an
ENVIRONMENTAL MANAGEMENT SYSTEM
 which complies with the requirements of
ISO 14001:2015
 for the following scope

- Manufacturing of medium & low voltage switchgear and components
- Manufacture and installation of mechanical equipment for industrial and environmental facilities including design of pressure vessels

Certificate No: CEM21586
 Issued: 13 June 2017 Originally Certified: 24 May 2011
 Expires: 23 May 2020 Current Certification: 13 June 2017


 Nicole Grantham
 General Manager SAI Global Certification Services


 ISO 14001


 WWW.JAS-ANZ.COM

Registered by:
 SAI Global Certification Services Pty Ltd, ACN 128 718 880, 885 George Street, Sydney, NSW, 2000 Australia with SAI Global Pty
 Limited 1800 400 400 Street Sydney NSW 2000 Australia. SAI Global is a subsidiary of the SAI Group. Terms and Conditions for
 Certification apply at www.sai-global.com and www.iso.org and its equivalent. SAI Global accepts responsibility only for
 product registration. This certificate remains the property of SAI Global and must be returned to SAI Global upon its withdrawal. To
 verify that this certificate is current please visit the SAI Global On Line Certification Register at www.sai-global.com



SKT MIGAS

KEMENTERIAN ENERGI DAN SUMBER DAYA MINERAL REPUBLIK INDONESIA
DIREKTORAT JENDERAL MINYAK DAN GAS BUMI

Gedung Migas, Jalan H.R. Rasuna Said Kav. E - 5, Jakarta 12910

Telp/Fax: 129141121/12 Telp: 52931111 (Pusat) Faksimil: 5211 529114 e-mail: migas@migas.esdm.go.id

Nomor	5148 /19.11/DMT/2016	09 Agustus 2016
Lampiran	satu lembar	
H a l	Surat Keterangan Terdaftar Migas	

Yang terhormat
 Direksi PT Guna Era Manufaktur
 Jalan Jati Raya Blok J-2 No. 1-2-3 Newton Techno Park
 Lippo Cikarang - Bekasi

Menunjuk surat Saudara Nomor C3/GE/16 0040 tanggal 18 Juli 2016 perihal surat permohonan pendaftaran perusahaan usaha penunjang minyak dan gas bumi berdasarkan hasil evaluasi terhadap kelengkapan dokumen, dengan ini kami sampaikan bahwa PT Guna Era Manufaktur dapat didaftarkan sebagai perusahaan penunjang nasional bidang usaha **INDUSTRI PENUNJANG** subbidang **INDUSTRI PERALATAN** dengan bagian subbidang:

PERALATAN BERTEKANAN Pressure Vessel

Sehubungan dengan ini kami kirimkan Surat Keterangan Terdaftar Migas sebagaimana terlampir, dengan nomor:

42/SKT-03/DMT/2016

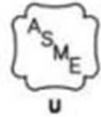
dan satu berkas dokumen perusahaan. Apabila diperlukan sewaktu-waktu kami dapat evaluasi kembali dokumen tersebut untuk pembinaan dan pengawasan.

Atas perhatian Saudara, kami ucapkan terima kasih.


 Direktur Teknik dan Lingkungan Migas
 Dr. Y. Joko Siswanto, MBA
 NIP. 19470523 199203 1016

Tembusan:
 Sekretaris Djen Migas

ASME U & U2



CERTIFICATE OF AUTHORIZATION

The named company is authorized by the American Society of Mechanical Engineers (ASME) for the scope of activity shown below in accordance with the applicable rules of the ASME Boiler and Pressure Vessel Code. The use of the certification mark and the authority granted by this Certificate of Authorization are subject to the provisions of the agreement set forth in the application. Any construction stamped with this certification mark shall have been built strictly in accordance with the provisions of the ASME Boiler and Pressure Vessel Code.

COMPANY:

PT Guna Era Manufaktur
Jl. Jati Raya Blok J2 No. 1
Newton Techno Park, Lippo Cikarang
Bekasi 17550
Indonesia

SCOPE:

Manufacture of pressure vessels at the above location and field sites controlled by the above location (This authorization does not cover impregnated graphite)

AUTHORIZED: August 28, 2015
EXPIRES: August 11, 2018
CERTIFICATE NUMBER: 35,989


Board Chair, Conformity Assessment


Director, Conformity Assessment



The American Society of Mechanical Engineers



CERTIFICATE OF AUTHORIZATION

The named company is authorized by the American Society of Mechanical Engineers (ASME) for the scope of activity shown below in accordance with the applicable rules of the ASME Boiler and Pressure Vessel Code. The use of the certification mark and the authority granted by this Certificate of Authorization are subject to the provisions of the agreement set forth in the application. Any construction stamped with this certification mark shall have been built strictly in accordance with the provisions of the ASME Boiler and Pressure Vessel Code.

COMPANY:

PT Guna Era Manufaktur
Jl. Jati Raya Blok J2 No. 1
Newton Techno Park, Lippo Cikarang
Bekasi 17550
Indonesia

SCOPE:

Manufacture of pressure vessels at the above location and field sites controlled by the above location

AUTHORIZED: August 28, 2015
EXPIRES: August 11, 2018
CERTIFICATE NUMBER: 35,990


Board Chair, Conformity Assessment


Director, Conformity Assessment



The American Society of Mechanical Engineers



THE NATIONAL BOARD
OF
BOILER & PRESSURE VESSEL INSPECTORS

Certificate of Authorization



This is to certify that

PT Guna Era Manufaktur
Jl. Jati Raya Blok J2 No. 1
Newton Techno Park, Lippo Cikarang
Bekasi, 17550
Indonesia

is authorized to use the R Symbol in accordance with the provisions of the National Board.

The scope of Authorization is limited as follows:

Metallic Repairs And/Or Alterations At The Above Location And Extended For Field Repairs And/Or Alterations Controlled By This Location

Certification Number: 9906

Issue Date: October 15, 2015

Expiration Date: August 11, 2018

Executive Director



KEMENTERIAN KETENAGAKERJAAN RI
DIREKTORAT JENDERAL
PEMBINAAN PENGAWASAN KETENAGAKERJAAN DAN KESELAMATAN DAN KESEHATAN KERJA

Jalan Jenderal Gatot Subroto Kav. 51, Jakarta Selatan 12950, Telp. 5255733, Ext. 604, 267, 264, 151
Telp. 021 5275240, 5260955, Faks. 5279365, 5213571, 5268045
Home page : <http://www.naker.go.id>

9 Agustus 2017

No : B.1218/BINWASK3-PNK3/VIII/2017
Lamp. : -
Sifat : Segera
Perihal : **Surat Keterangan Hasil Audit Sistem Manajemen K3**

Kepada Yth.
Sdr. Pimpinan PT. Guna Era Manufaktur
Jl. Jati Raya Blok J 2 No. 1, 2, 3 Newton Techno Park – Lippo
Cikarang, Desa Serang, Kec. Cikarang Selatan, Kabupaten
Bekasi

Memperhatikan surat dari PT. Alkon Indo Sejahtera No. 580/AIS/JKT/VII/17 tanggal 26 Juli 2017 dan berdasarkan laporan audit sistem manajemen K3 yang dilaksanakan oleh PT. Alkon Indo Sejahtera sebagai Lembaga Audit SMK3, maka dengan ini dapat dijelaskan bahwa PT. Guna Era Manufaktur, telah melaksanakan Audit SMK3 pada tanggal 12 - 13 Juni 2017 dengan hasil pencapaian 75,41% dan merekomendasikan untuk mendapatkan "Tingkat Penilaian Baik" untuk Kategori Tingkat transisi".

Surat keterangan audit ini berlaku dan berkekuatan hukum sama dengan sertifikat SMK3 sampai diterbitkannya sertifikat tersebut.

Demikian keterangan ini dibuat untuk dapat dipergunakan sebagai persyaratan lelang dan kegiatan lain yang terkait, semoga hasil Audit SMK3 tersebut dapat memberikan motivasi bagi manajemen dan para pekerja dalam menciptakan nihil kecelakaan kerja dan penyakit akibat kerja.

A.N. Direktur Jenderal Binwasnaker dan K3
Direktur Pengawasan Norma
Keselamatan dan Kesehatan Kerja



Drs. Herman Prakoso Hidayat, M.M
NIP. 19590412 198603 1 001



Tembusan Kepada Yth. :

1. Dirjen Binwasnaker dan K3 (sebagai laporan)
2. Direktur PT. Alkon Indo Sejahtera
3. Kepala Dinas Tenaga Kerja Provinsi Jawa Barat



Electrical Division



GAECLAD

METAL-CLAD Switchgear up to 24 kV



SPECIFICATION

Description	Unit	Data	
Switchboard		GC 12	GC 24
Type of construction		Metal-clad	Metal-clad
Rated Voltage	kV	12	24
Rated Frequency	Hz	50/60	50/60
Rated Power Frequency withstand voltage / 1 minute	kV	42	65
Rated lightning impulse withstand voltage (peak)	kV	75	125
Rated current of busbar	A	630/1250/1600/2000/2500/3150/4000	630/1250/1600/2000/2500
Rated short time withstand current (3s)	kA	20/25/31.5/40/50	20/25/31.5
Rated peak withstand current (peak value)	kA	50/63/80/100/125	50/63/80
Ingress Protection		Panel IP3X/4X, compartment IP 2X	

Air Insulated Modular Panel System With SF6 LBS & CBS



SPECIFICATION

Rated voltage	(kV)	12	24
withstand voltage to earth and between poles 50 Hz 1 min	(kV)	28	50
Impulse withstand voltage to earth and between poles	(kV)	75	125
Rated current	(A)	40÷630	40÷630
Breaking capacity for active circuit (cos ϕ 0.7)	(A)	40÷630	40÷630
Breaking capacity for no load transformer	(A)	25	25
Breaking capacity for no load line and cables	(A)	25	25
Short time current 1s	(kA)	12.5÷20	12.5÷20
Short time current 2s	(kA)	12.5÷20	12.5÷20
Short time current 3s	(kA)	12.5÷16	12.5÷16
Making capacity	(kA)	31.5÷50	31.5÷50
Transfer current	(kA)	2100	800
Internal arc proof 0,5s	(kA)	12.5÷14	12.5÷14
Internal arc proof 1s	(kA)	16	16



Air Insulated Modular Panel With Air Load Breaker Switch



SPECIFICATION

Rated Voltage	(kV)	12	17,5	24
Withstand voltage to earth between poles (50Hz 1 min)	(kV)	28	38	50
		42		
Impulse withstand voltage to earth and between poles	(kV)	75	95	125
Rated current LBS	(A)	400	400	400
		630	630	630
Rated current main busbar	(A)	400	400	400
		1250	1250	1250
Short time current -1s	(kA)	12.5÷25	12.5÷25	12.5÷25
Short time current -2s	(kA)	12.5÷20	12.5÷20	12.5÷20
Short time current -3s	(kA)	12.5÷16	12.5÷16	12.5÷16
Making capacity	(kA)	31.5÷62.5	31.5÷62.5	31.5÷62.5

MCC



SPECIFICATION

Rated voltage	Up to 1000V
1 Minute power frequency voltage	250V
Rated frequency	50/60Hz
Main busbar rating	800-1400-2500A-4000*
Vertical busbar rating	800A
Rated short time current (1s)	50kA
Rated peak withstand current	125kA
Auxillary circuit rated voltage	380A
Maximum rating of a "withdrawable" starter	400A

*** On Request**

Outdoor Substation



SPECIFICATION

Material	Steel Plate with galvanic
Thickness Plate	2 mm
Color Standard	Light Gray, RAL 7032
Pre-Treatment	Zn Phosphate
Power Coating	Epoxy Polyester
Ingress Protection	IP 34
Rated Voltage	12÷36 kV
Rated Current	400÷1250 A



GAE GRM

Series SF⁶ Extensible Ring Main Unit



SPECIFICATION

Electrical Data	Unit	Value	
Rated Voltage	kV	12	24
Rated Nominal Frequency	Hz	50/60	
Test Voltage 1 min. 50/60Hz against earth and between the phase	kV	42	50
Test Voltage 1 min. 50/60Hz between the open contact of the switch disconnector	kV	48	60
Impulse withstand voltage against earth and between the phase	kV	75	125
Impulse withstand voltage between the open contact of the switch disconnector	kV	85	145
LBS Electrical Data			
Rated Current	A	630	630
Mainly active load	A	630	630
Rated Short-time withstand current	KA	20	20
Rated Peak withstand current	KA	500	50
Rated Short Circuit Making Current (Peak)	KA	500	50
VCB Electrical Data			
Rated Current	A	630/1250	
Rated Short-time Breaking current	KA	20/25	20
Rated Operating Sequence		O - 0,3s - CO - 180s - CO	
Rated Peak Short time withstand current	KA	20/25	20
Rated Short Circuit Making Current (Peak)	KA	50/63	50



GAE TPR6 PLUS

Medium voltage switchgear

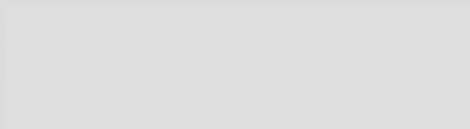
Up to 2500A - 24kV

Up to 2000A - 36kV



Main characteristics

Mechanical and Electrical Characteristics		U.M.						
		kV	7,2	12	12 ⁽¹⁾	17,5	24	36
Altitude	IEC 62271-1	m	<1000 ⁽⁵⁾					
Ambient air temperature	IEC 62271-1	°C	-25 +55 ⁽²⁾					
Relative humidity		%	95					
Insulation Rated Voltage		kV	7,2	12	12	17,5	24	36
Rated Voltage		kV	7,2	12	12	17,5	24	36
Lightning impulse withstand voltage between phases and towards the ground		kV	60	75	95	95	125	170
Lightning impulse withstand voltage across the isolating distance		kV	70	85	110	110	145	195
Power frequency withstand voltage between the phases		kV	20	28	42	38	50	70
Power frequency withstand voltage across the isolating distance		kV	23	32	48	45	60	80
Rated Frequency		Hz	50-60					
Rated current		A	1250 - 2500					1250 - 2000
Rated short time withstand current I _k		kA	25 / 31,5 ⁽⁷⁾					
Rated peak withstand current I _p (making capacity)		kA	2,5 x I _k ⁽⁴⁾					
Rated duration of short circuit t _k		s	3 / 1 ⁽⁷⁾					
Degree of protection on front face		IP	3X ⁽³⁾					
Degree of protection on electrical MV circuits		IP	67					
Mechanical operation	Earthing switch IEC 62271-102	1.000 operations / Class M1						
Electrical operation	Earthing switch IEC 62271-102	making capacity 5 / Class E2 ⁽⁶⁾						
Mechanical operation	Circuit breaker IEC 62271-100 CB module	M1 (2000 operation) - M2 / 10,000 operations						
Electrical operation	Circuit breaker IEC 62271-100 CB module	Class E2 ⁽¹⁾						
Making & Breaking on fuse switch	TF / FM module	kA rms	25	25	25	25	25	20
Breaking at rated transfert current (I _{transfer})	TF / FM module	A	2100	1800	1800	1600	1400	840
Rated operating sequence	Circuit breaker IEC 62271-100	O - 0,3s - CO - 15s - CO						
Internal arc withstand current (kA - 1s)		kA	25					



Experience



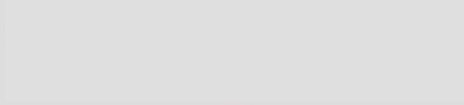


PLN SEJAWA – BALI (24kV - METAL ENCLOSED)



Container SS – Diesel Power Plant | PLTD JAKABARING





Container SS – GAS Turbine Power Plant | PLTG SEMBERAH



GI TUBAN AWAR-AWAR



LV MCC | PT. Pupuk Kaltim



DC Panel for PT. KAI (Railway)



MCC SV-18 for Tuban Cement Factory



PT Rekayasa Industri - Lahendong

